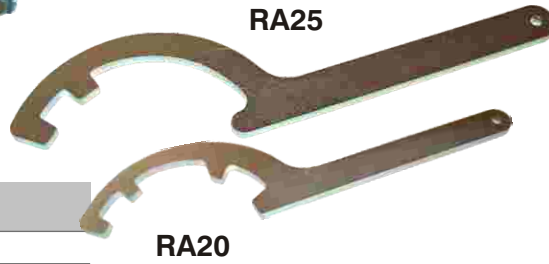


YANGINA MÜDAHALE TECHİZATLARI

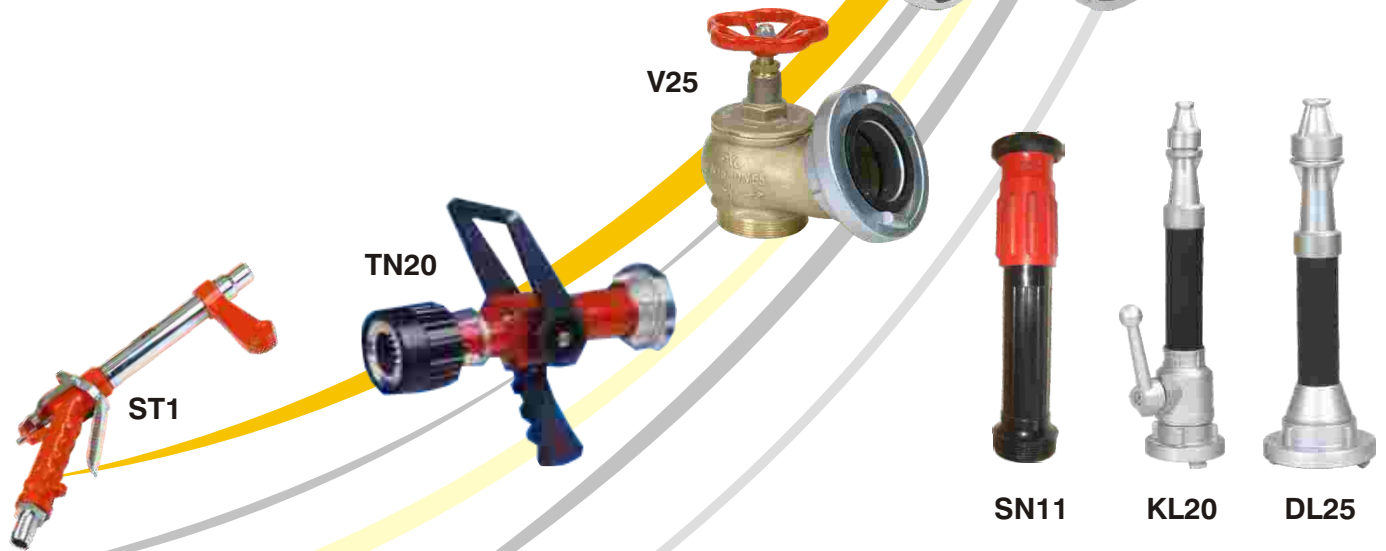
fire fighting equipments

Model No. Model #	Cinsi Description	Boru Çapı Diameter
KR21	2"-1" Kuyruklu Rekor / Coupling With Tail	25 mm
RK20	2" Rekor Kapağı (Zincirli) / Blank Caps With Chain	
HR20	2" (85 lik) Hortum Rekoru / Fire Hose Couplings	52 mm
YDRD20	2" - 2" Dıştan Dişli Rekor / Female Thread Couplings	

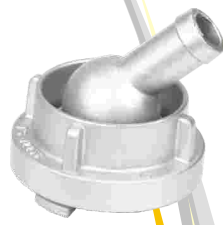


Model No. Model #	Cinsi Description
RED20	2" - 2,5" Redüksiyon / Reduction
RA20-25	2" - 2,5" Rekor Anahtarı / Coupling Spanner

Model No. Model #	Cinsi Description
W20	2" (85) Rekorlu Waygate / 2" (85) Waygate with coupling
W25	2,5" (110) Rekorlu Waygate / 2,5" (110) Waygate with coupling
ST1	1" Su Tabancası / Water Gun
TN20	2" Rekorlu İthal Turbo Nozul / 2" Importe Turbo nozzle with coupling
KL20	2" Kumandalı Lans (Alüminyum) / Controlled Nozzle (Aluminium)
DL25	2,5" Düz Lans (Alüminyum) / Nozzle (Aluminium)
SN11	2" Difüzer Sis Nozulu / 2" Diffuser nozzle



KR21



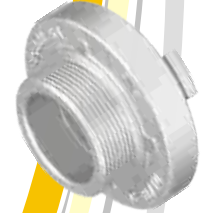
RK20



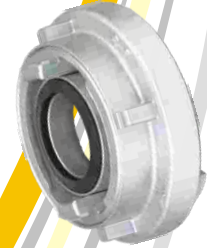
HR20



YDRD20



RED20



W20



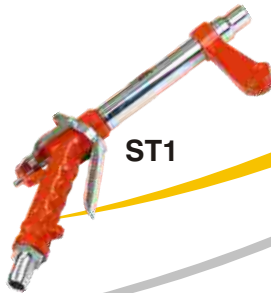
V25



TN20



ST1



SN11

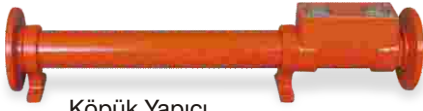


KL20



DL25





Köpük Yapıcı
Foam Maker



Köpük Oranlayıcı
Foam Liquid Inductor

Model Model #	Rekor Tipi inlet storz / thread	Su Miktarı lt/dk Mixture flow rate l/min	Uzunluk (mm) Length	Yükseklik (mm) Height	Genişlik (mm) Width	Ağırlık (kg) Weight	Köpük Atış Mesafesi (m/5 bar) Foam throw distance
M2*	C X C	200	590	240	190	3.65	6
M4*	C X C - B X B	400	665	305	270	4.65	8

* Krom Gövde / Cr-Ni Body

Model Model #	Giriş ve Çıkış Rekorlar in and out outlet storz / thread	Su Miktarı lt/dk Mixture flow rate l/min	Uzunluk (mm) Length	Yükseklik (mm) Height	Genişlik (mm) Width	Ağırlık (kg) Weight
Z2*	C X C	200	350	180	165	5.4
Z2A*	C X C	200	350	180	165	5.2
Z4*	C X C - B X B	400	350	180	165	5.4
Z4A*	C X C - B X B	400	350	180	165	5.2
Z8*	B X B	800	500	190	165	8.5
Z8A*	B X B	800	500	190	165	8.3

A* Alüminyum Gövde / Aluminium Body * Piriç Gövde / Brass Body

Model Model #	Rekor Tipi inlet storz / thread	Su Miktarı lt/dk Mixture flow rate l/min	Uzunluk (mm) Length	Yükseklik (mm) Height	Genişlik (mm) Width	Ağırlık (kg) Weight	Köpük Atış Mesafesi (m/5 bar) Foam throw distance
S2*	C X C	200	845	125	100	3.2	20
S2A*	C X C	200	845	125	100	2.8	20
S4*	C X C - B X B	400	890	130	125	3.6	26
S4A*	C X C - B X B	400	890	130	125	3.2	26
S8*	B X B	800	1000	132	127	4.5	28
S8A*	B X B	800	1000	132	127	4.1	28

A* Alüminyum Gövde / Aluminium * Krom Gövde / Cr-Ni

ÖZELLİKLER / SPECIFICATIONS

Yangın Sınıfı / Fire Class	A.B.C
Renk / Colour	Açık Kahverengi / Light Brown
Temel Maddeler / Basic Matters	Yağ Alkol Sülfatları / Fatty Alcohol Sulphates
Yoğunluk 20°C gr/cm ³ / Density (20°C gr/cm ³)	1.060±0.005
pH Değeri 20°C'de / pH Value at 20°C	6.0 - 8.0
Viscosity Kinematik mm ² /dk./Viscosity Kinematics mm ² /min.	20°C max. 30 / 0°C max. 60
Köpük Tipi / Foam Type	Ağır, Orta, Hafif / Heavy, Medium, Light
Ağır Köpük için / For Heavy Foam	10 - 25
Orta Köpük için / For Medium Foam	25 - 100
Hafif Köpük için / For Light Foam	100 - 500
Akma Noktası °C max / Four point °C max.	-15
Sedimentasyon max.% / Sedimentation max. %	0.05
Stabilite %50 dak. max. / Stability 50% min. max.	20

Köpüklü Su Monitörü
Foamy Water Monitor

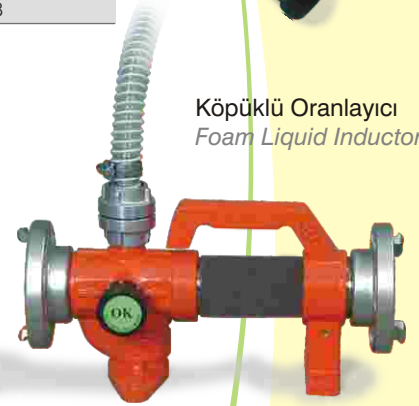


Giriş Basıncı Inlet pressure	Normal Debi Normal Flow	Max Su Atış Mesafesi Max Water Throw Distance	Max Köpük Atış Mesafesi Max Foam Throw Distance
5	2300	45 m	55 m
7	2700	60 m	65 m
10	3000	85 m	73 m

Orta Köpük Lansı
Medium Foam Nozzle



Köpüklü Oranlayıcı
Foam Liquid Inductor



Ağır Köpük Lansı
Heavy Foam Nozzle



Sentetik Köpük Konsantresi
Synthetic Foam Concentrate

