

EN 671-2

bina içi **bez hortumlu**

yangın dolapları indoors fire hose
cabinets with flat hose

Genel Özellikleri *General Specifications*

Kasa *Body*

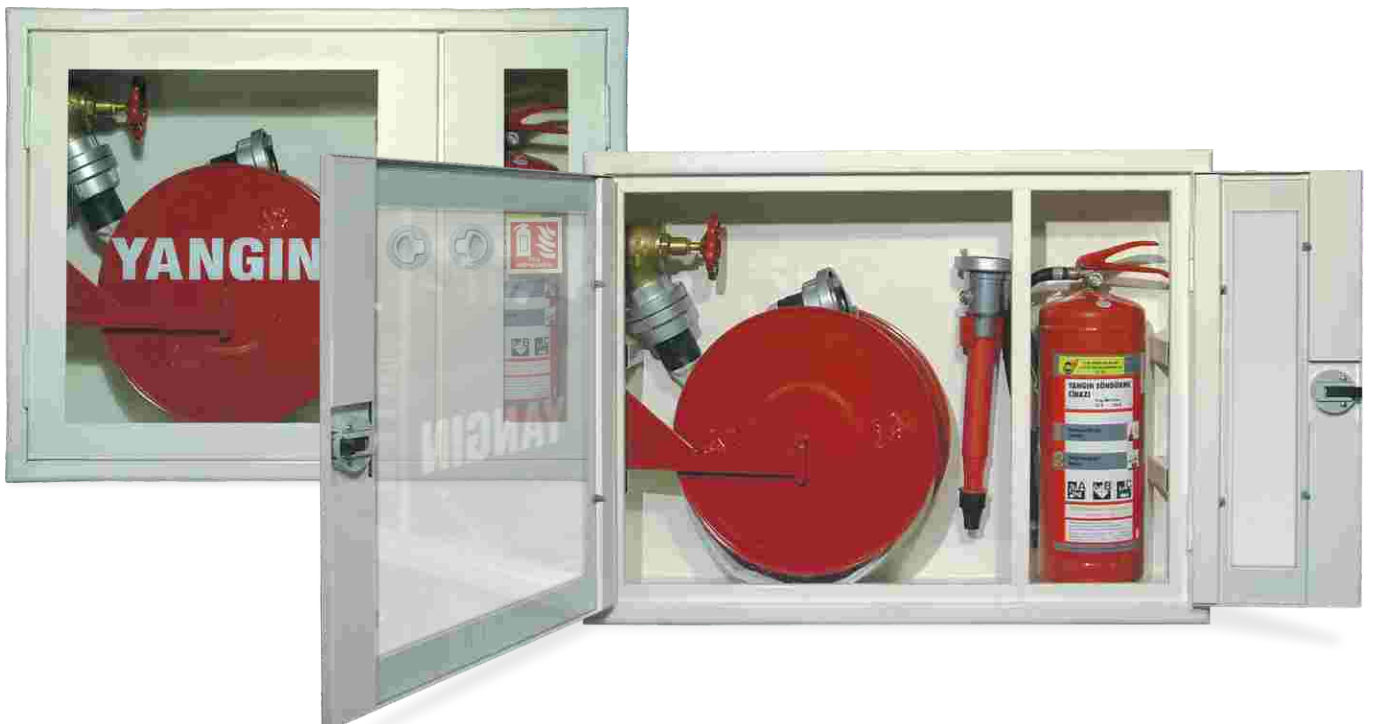
- 1,20mm DKP sacdan demonte • 1,20mm pickled sheet metal, demountable
- 8 ayrı bölgeden su girişine müsait • Convenient for water inlet in 8 different points
- Standart ebat dışında • In addition to standard dimensions
- özel ölçümlendirme seçeneği • special dimensions are available
- İstenilen RAL renginde • Requested RAL colours
- 70 mikron elektrostatik toz boya • 70 micron electrostatic powder coating

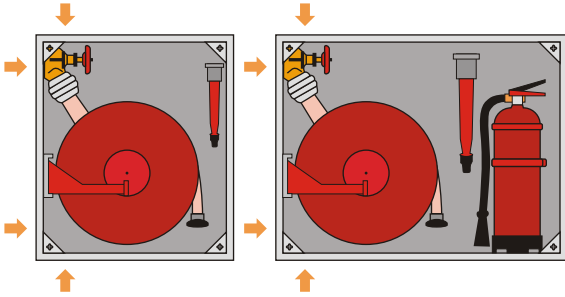
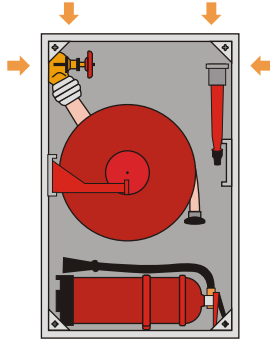
Kapak *Door*

- 1,20mm DKP veya kromnikel sac • 1,20mm pickled or chrome-nickel sheet metal
- Radüslü, demonte çerçeve • Demountable frame with radius
- Temperli (darbeye dayanıklı) • Normal, smoked,
- düz, füme, kumlu cam seçenekleri • sandy tempered glass alternatives
- İstenilen RAL renginde • Requested RAL colours
- 70 mikron elektrostatik toz boya • 70 micron electrostatic powder coating

Makara *Reel*

- 1,00mm DKP sac, • 1,00mm pickled sheet metal painted
- RAL 3002 elektrostatik toz boyalı • RAL 3002 electrostatic powder coating
- Ø 370mm press baskı çelik disk • Ø 370mm pressed steel disc
- Makara diskini gövdeye bağlayan özel kol • Special handle connecting reel disc to body
- 2" çapında alüminyum • 2" diameter flat hose with aluminum
- enjeksiyon rakorlu yassı hortum • injection coupling
- 2" düz veya kumandalı su lansı • 2" straight or controlled water nozzle
- 2" pirinç yangın vanası • 2" brass fire valve





Model No. Model #	Hortum Uzunluğu (m) Hose Length (m)	Ebatları (mm) Dimensions (mm)	Bayındırlık Poz. No.	Sipariş No. Order Number
	Ø 2" 85 mm Ø 2¼" 110 mm	Gen * Yüksek * Derinlik Width * Height * Depth		
ES 655	20	650 * 550 * 160	102-1301	0017
ES 68	20	600 * 800 * 200	102-1302	0019
ES 86	20	800 * 600 * 200	102-1302	0020

